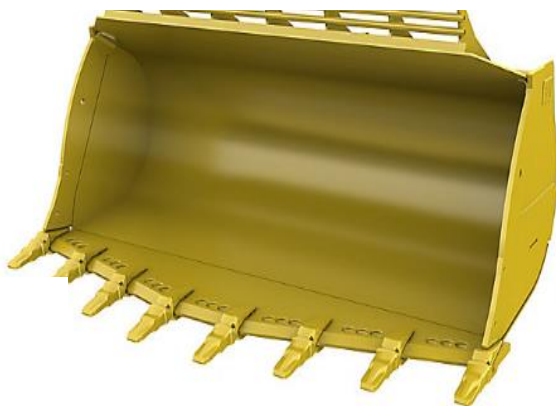


EARTHMOVING WEARPARTS

Leading Ground Engaging Tool Supplier
Extensive Range of Top Quality REW Products
Dealers Throughout Southern Africa





Bofors Adaptors



Part No.	Alternate Numbers		B Lock
REW201	B31006	200B	REW301
REW202	B31004	400B	REW302
REW203	B32004	800B	REW303
REW204	B33004		REW304

Bofors Teeth



<i>Part No.</i>	<i>Alternate Numbers</i>			<i>Adaptor</i>
REW101	B30101	4046815	2500FNB	REW201
REW102	B31102	4047168	4500FNB	REW202
REW103	B32101	3031538	8000FNB	REW203
REW104	B33102	3027705	12000FNB	REW204

Bofors B Locks



Part No.	Alternate Numbers			Teeth
REW301	6254673	HB30201		REW101
REW302	6254675	HB31201		REW102
REW303	6254677	HB32201		REW103
REW304	6254682	HB33201		REW104

Caterpillar Adaptors

CAT – Flush Mounted Weld on Adaptors



<i>Part No.</i>	<i>OE No.</i>	<i>M/C</i>	<i>Pin</i>	<i>Retainer</i>
REW1204	4T1204	J200	RPJ200	RRJ200
REW1254	IU1254	J250	RPJ250	RRJ225/250/300
REW1304	IU1304	J300	RPJ300	RRJ225/250/300
REW1354	IU1354	J350	RPJ350	RRJ350/450

CAT – Bolt on Adaptors



Excellent impact resistance
Excellent penetration ability

<i>Part No.</i>	<i>O E No.</i>	<i>M/C</i>	<i>Pin</i>	<i>Retainer</i>
REW0257	1U0257	J250	RPJ250	RRJ225/250/300
REW2184	8E2184	J200	RPJ200	RRJ200
REW3357	3G3357	J350	RPJ350	RRJ350/450
REW4307	4T4307	J300	RPJ300	RRJ225/250/300

CAT – Weld on Double Strap Adaptor



1



3



2

Excellent retention in high impact conditions

Part No.	OE No.	OE No.	M/C	Type
REW1193205	119-3205		J200	1
REW3224	6Y3224		J225	1
REW6304	3G6304		J300	1
REW1359354	135-9354		J350	2
REW8354	3G8354		J350	1
REW3404	7T3404		J400	1
REW6464	8E6464		J450	1
REW6465	8E6465		J450	3
REW6466	8E6466		J450	3
REW1553	IU1553	6I6554	J550	1
REW6604	6I6604		J600	1
REW4704	4T4704		J700	2
REW4708			J700	2
REW4710			J700	2

CAT – Heavy Duty Adaptors



Weld on rock bucket option

<i>Part No.</i>	<i>O E No.</i>	<i>Tip Size</i>	<i>Pin</i>	<i>Retainer</i>
REW3464	8E3464	J460	RPJ460	RRJ460
REW9494	3G9494	J550	RPJ550	RRJ550
REW8804	6I8804	J800	AC1808	AC1809

CAT – Corner Guard Adaptor



Protects Bucket Corner

Part No.	O E No.		Bolt	Nut
REW2208/9	IU2208/9	1 bolt cnr adaptor	BP7830	NUT 7/8"
REW4258/9	3G4258/9	1 bolt cnr adaptor	BP1035	AC8J2933
REW4308CA/9	3G4308/9	1 bolt cnr adaptor	ACSP8823	AC5P8362
REW5308/9	8E5308/9	2 bolt cnr adaptor	ACSP8823	AC3K9770
REW5358/9	8E5358/9	2 bolt cnr adaptor	ACSP8361	AC3K9770
REW5358A/9A	3G5358/9	1 bolt cnr adaptor	ACSP8823	AC5P8362
REW9250/51	6I9250/51	2 bolt cnr adaptor	BP1035	AC8J2933

Caterpillar Tips

CAT Tips – STD Long



The best choice for most applications

Part No.	O E No.	M/C	Pin	Retainer
REW3202	1U3202	J200	RPJ200	RRJ200
REW3222	6Y3222	J225	AC3228	RRJ225/250/300
REW3252	IU3252	J250	RPJ250	RRJ225/250/300
REW3302	IU3302	J300	RPJ300	RRJ225/250/300
REW3352	IU3352	J350	RPJ350	RRJ350/450
REW3402	7T3402	J400	RPJ400	RRJ400
REW8452	9W8452 / IU3452	J450	RPJ450	RRJ350/450
REW8552	9W8552	J550	RPJ550	RRJ550
REW8802	6I8802	J800	RPJ1808	RRJ1809

CAT Tips – Penetration



Better penetration – Less wear material
For use in densely compacted material i.e. clay

Part No.	O E No.	M/C	Pin	Retainer
REW8259	9W8259	J250	RPJ250	RRJ225/250/350
REW4309J	9J4309	J300	RPJ300	RRJ225/250/300
REW4359	9J4359	J350	RPJ350	RRJ350/450
REW5409	6Y5409	J400	RPJ400	RRJ400
REW7409	6Y7409	J400	RPJ400	RRJ400
REW8459	9W8459	J450	RPJ450	RRJ350/450
REW4559	9J4559	J550	RPJ550	RRJ50
REW7609	7I7609	J600	RPJ600	RRJ600
REW4709	4T4709	J700	RPJ700	RRJ700
REW6809	1176809	J800	AC1808	AC1809

CAT Tips – Heavy Duty Long



Greater strength. Better penetration. More wear material.

Part No.	O E No.	M/C	Pin	Retainer
REW4252	9N4252	J250	RPJ250	RRJ225/250/300
REW4302	9N4302	J300	RPJ300	RRJ225/250/300
REW4352	9N4352	J350	RPJ350	RRJ350/450
REW4402	8E4402	J400	RPJ400	RRJ400
REW4452	9N4452	J450	RPJ450	RRJ350/450
REW4552	9N4552	J550	RPJ550	RRJ550
REW0602	7Y0602	J600	RPJ600	RRJ600
REW9702	9U9702	J700	RPJ700	RRJ700

CAT Tips – Heavy Duty Abrasion



Greater wear material. Good strength. Good penetration.

For use in sand, gravel and shot rock.

Part No.	O E No.	M/C	Pin	Retainer
REW3203	4T2203	J200	RPJ200	RRJ200
REW4253	9N4253	J250	RPJ250	RRJ225/250/300
REW4303	9N4303	J300	RPJ300	RRJ225/250/300
REW4353	9N4353	J350	RPJ350	RRJ350/450
REW4453	9N4453	J460	RPJ460	RRJ460
REW9703	9U9703	J700	RPJ700	RRJ700

CAT Tips – Heavy Duty Penetration



High impact. Hard to penetrate material. Increased wear life. Stays sharp.

Part No.	O E No.	M/C	Pin	Retainer
REW1386451	1386451	J450	RPJ450	RRJ450
REW1386552	1386552	J550	RPJ550	RRJ550
REW1359600	1359600	J600	RPJ600	RRJ600
REW1359700	1359700	J700	RPJ700	RRJ700

CAT Tips – Abrasion



For use in abrasive materials such as sand or gravel

Part No.	O E No.	M/C	Pin	Retainer
REW1453	9W1453	J450	RPJ450	RRJ450
REW2553	6Y2553	J550	RPJ550	RRJ550

CAT Tips - Heavy Duty Penetration



Application :
Where abrasion and penetration is required.

<i>Part No.</i>	<i>M/C</i>	<i>PIN</i>	<i>RETAINER</i>
REW1453PT3	J450	RPJ460	RRJ460

CAT Tips – Rock Penetration



<i>Part no.</i>	<i>OE No.</i>	<i>M/C</i>	<i>Pin</i>	<i>Retainer</i>
REW20SPR		J200	RPJ200	RRJ200
REW25SPR		J250	RPJ250	RRJ250
REW30SPR		J300	RPJ300	RRJ300
REW35SPR		J350	RPJ350	RRJ350
REW40SPR		J400	RPJ400	RRJ400
REW45SPR		J450	RPJ450	RRJ450
REW55SPR		J550	RPJ550	RRJ550
REW60SPR		J600	RPJ600	RRJ600
REW70SPR		J700	RPJ700	RRJ700

All manufactured names, numbers, symbols and descriptions are used for reference purposes and it is not implied that any part listed is the product of those manufacturers.

Copyright © REW 2005. All rights reserved.

CAT – Penetration Tips



- Good Penetration
- For use in densely compacted material i.e. shale and rock

Part No.	O E No.	M/C	Pin	Retainer	Type
REW55PP		J550	RPJ550	RRJ550	

CAT TIPS - Heavy Duty Penetration



Application :

Where longer life and penetration is required.

Part No.	M/C	PIN	RETAINER
REW45CE	J450	RPJ460	RRJ460
RRW55CE	J550	RPJ550	RRJ550
REW60CE	J600	RPJ600	RRJ600

Pins



Part No.	Alternate Part Numbers			Fitting Retainer
AC1808	134-1808			AC1809
AC6583	9W2668			RRJ350/450
RPJ200	8E6208			RRJ200
RPJ225	1324762	6Y3228		RRJ225/250/300
RPJ250	1324763	8E6258	9J2258	RRJ225/250/300
RPJ300	1324766	8J2308		RRJ225/250/300
RPJ350	1140358	8E6358	9W2678	RRJ350/450
RPJ400	1167408	7T3408		RRJ400
RPJ450	6Y2527	IU1458	9J4458	RRJ350/450
RPJ460	1140468	8E0468		RRJ460
RPJ550	1073378	6Y8558	IU1558	RRJ550
RPJ600	1139608	6I6608		RRJ600
RPJ700	1134708	9U9616		RRJ700

Retainers



Part No.	OE No.		Fitting Pin
RRJ200	8E6209		RPJ200
RRJ225/250/300	1495733	8E6259	RPJ225
RRJ350/450	1140359	8E6359	RPJ350
RRJ400	1167409	8E8409	RPJ400
RRJ460	1093469	8E8469	RPJ460
RRJ550	1078559	8E5559	RPJ550
RRJ600	1139609	6I6609	RPJ600
RRJ700	1134709	4T4707	RPJ700
AC1809	134-1809		AC1808

CAT – Ripper Shanks



Part No.	O E No	M/C	Pin
REW3139	9J3139	D5, D6, 973, 16G, D65	RPJ350/RRJ350/450
REW6586	6J6586	D4, 140H, 140G, 14H	AC6583/RRJ350/450
REW9776	4T9976	D9	AC9600/AC8811

Shanks Protectors



Part No.	O E No.	Fitting M/C	Pin	Retainer
REW1848	8E1848	D9	AC9600/AC6Y3394	AC8E4743
REW8335	9W8365	D10	AC6Y1204	AC6Y1202
REW8814	6J8814	D9	AC9600/AC6Y3394	AC8E4743

Guards / Side Bar Protectors



2



1

Protects bucket sides.

Part No.	Machine	Pin	Type	Fastener
REW04003	Various		2	
REW1358246	966/977		1	
REW9600	980/988	AC1359350	1	
REW1250800			1	

CAT – Ripper Tip Small



2



1

Part No.	O E No.	Type	Pin	Retainer
REW0359	6Y0359	1	RPJ350	RRJ350/450
REW8910	6Y0309	1	AC6583	RRJ350/450
REW3309	7J3309	2	AC3G0500	

CAT – Ripper Tip Large



2



1



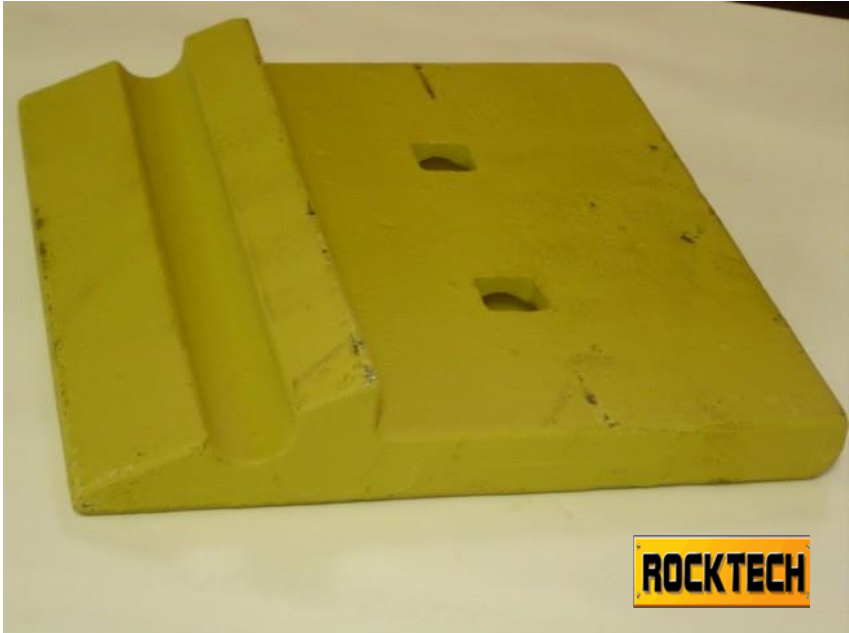
3

Good Penetration

* When shank not recessed for retainer

Part No.	O E No.	M/C	Pin	Retainer	Type
REW5502	4T5502	D10	AC6Y1204	AC6Y1202	1
REW5503	4T5503	D10	AC8811*		1
REW2451	9W2451	D9	AC6Y3394	AC8E4743	2
REW2452	9W2452	D9	AC9600*		
REW3552		D11	RPJ600	RRJ600	3

Segments



Protects base edge between teeth / eliminating scalloping of cutting edge

<i>Part No.</i>	<i>Machine</i>	<i>Bolt</i>	<i>Nut</i>
REW2185	TLB – Bolt on	BP5822	NUT 5/8"

CAT – Grader



Part No.	O E No.	
REW5124	9F5124	Shank
REW5572	2D5572/6Y5230	Tip
REW1459	5K1459	Shank lock

CAT – Grader Turn Circle



Part No.		Machine
REW5T2925	Wear strip	120G
REW5T8366	Wear strip	140G
REW5T8367	Wear strip	140H/G
REW6D5415	Hitch plate	140G/H
REW6G4524	Insert	140G/H
REW6G4525	Insert	140G/H
REW8W1749	Hitch plate	140G/H

Plow Bolts – Induction Hardened



Oil coated. Exceeds grade 8 Specification.

Part No.	O E Ref	Bolt Dia	Bolt Lth	
AC21850	198-71-21850	1 3/8"	5"	
AC5P8136	5P8136	1"	4"	
AC5P8361	5P8361	1 1/4"	5"	
AC5P8823	5P8823	1 1/4"	4"	
BP1030	4F4042	1"	3"	
BP1035	4J9208	1"	3 1/2"	
BP1045	1J3527	1"	4 1/2"	
BP12570	2099311	1 1/4"	7"	
BP3425	5J4773	3/4"	2 1/2"	
BP3430	1J6762	3/4"	3"	
BP3435	5F8933	3/4"	3 1/2"	
BP3450	1J4947	3/4"	5"	
BP5822	3F5108	5/8"	2 1/4"	
BP5825	4F3656	5/8"	2 1/2"	
BP5830	4F3658	5/8"	3"	
BP7825	5J4772	7/8"	2 1/2"	
BP7830	5J2409	7/8"	3"	
BP7835	2J2548	7/8"	3 1/2"	

NUTS – Hex – Hardened Course Thread – (UNC)



Oil coated. Grade 8 system compatible.

Part No.	O E Ref	Bolt Dia	
NUT 1"	2J3507	1"	
NUT $\frac{3}{4}$ "	2J3506	$\frac{3}{4}$ "	
NUT $\frac{5}{8}$ "	4K0637	$\frac{5}{8}$ "	
NUT $\frac{7}{8}$ "	2J3505	$\frac{7}{8}$ "	
AC3K9770	3K9770	1 $\frac{1}{4}$ "	
AC21911	198-71-21911	1 $\frac{3}{8}$ "	

Tapered Nuts



Part No.	O E Ref	Bolt Dia	
AC5P8362	5P8362	1 1/4"	
AC8J2933	8J2933	1"	

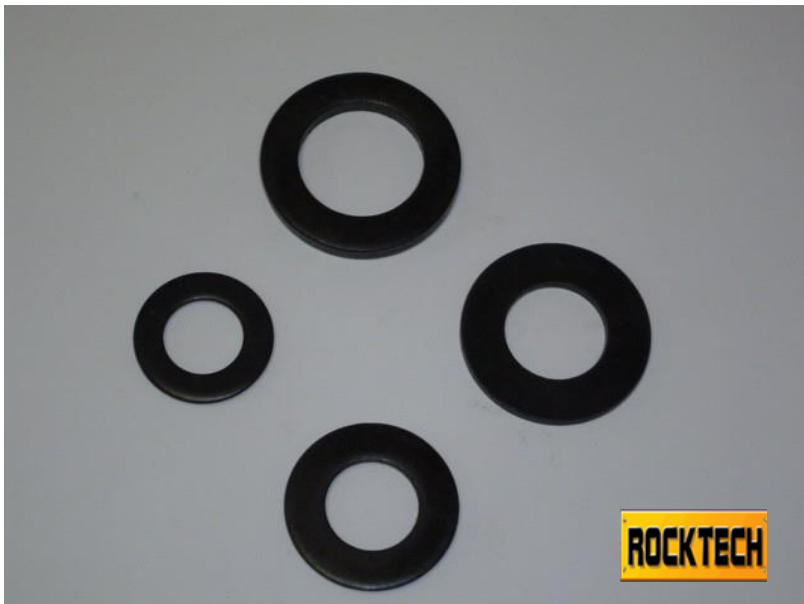
Track Bolts – Induction Hardened



Exceeds SAE grade 8 Specification

<i>Part No.</i>	<i>Mach Mod.</i>	<i>Nut Part No.</i>	<i>No. Per Mach</i>
AC6T2638	D9N	AC7G0343	334
AC7T1000	D10N	AC5P8221	324
AC7H3598	D6/D7	AC1S1860	

Washers – Flat Hardened



Oil coated. Grade 8 system compatible.

Part No.	Bolt Dia	
AC3K5234	1"	
AC4K0684	1 1/4"	
AC5P8247	5/8"	
AC5P8248	3/4"	
AC5P8249	7/8"	

Daewoo



<i>Part No.</i>		<i>M/C</i>	<i>Fastener</i>	<i>Retainer</i>
REW27131059	Side Cutter	S220	BH7830	
EW27131060	Side Cutter	S220	BH7830	
REW27131217	Tip	S200/S220/S240	RPJ350	AC6845
REW27131319	Tip	S290V	RPJ450	AC6845
REW27130032	Tip	Doosan 340	REW340P	REW340R
REW27131236	Tip	Doosan 500	REWD500P	REWD500R

Esco Adaptors



Part No.	Fitting Tooth		Pin	Lock
REW103476	REW76SD		REW76PN	REW76LK
REW51425	REW25R12	REW512HD	AE002RP	AE002RB
REW51425HD	REW25R12	REW512HD	AE002RP	AE002RB
REW79535R	REW35R15		AE004RP	AE004RB
REW85530	REW30S		REW2530PN	REW2530LK

Esco Tips



1



2



3



4



5



6

Part No.	Type	Lock	Pin
REW18TL	1	REW18LK	REW18PN
REW30S	1	REW2530LK	REW2530PN
REW57VHHS	2	REW57LKS	
REW66FP	5	REW66LK	REW66PN
REW66SD	4	REW66LK	REW66PN
REW76SD	3	REW76LK	REW76PN
REW21SYL	6	REW21LK	
REW27SYL	6	REW27LK	
REW37SYL	6	REW37LK	
REW47SYL	6	REW47LK	

Esco Tips Super V



1



2



3

Part No.	Type	Lock	
ESV69SD	1	ESV69PN	
ESV71SD	1	ESV71PN	
REW69	2	ESV69PN	
REW69RB	3	ESV69PN	
REW71	2	ESV71PN	
REW71RB	3	ESV71PN	

Esco Type Tips Ripper



1



2



3

Part No.	Type	Pin	Rubber
REW22R10	2	AE002RP	AE002RB
REW25R12	2	AE002RP	AE002RB
REW35R15	2	AE004RP	AE004RB
REW39R17	1	AE005RP	AE005RB
REW512HD	3	AE002RP	AE002RB

Esco Pins (Ripper)



Part No.	O E Ref	Fitting Tooth
AE002RP	25RP	ES25R112/ES25R114/REW25R12/REW512HD
AE004RP	35RP	ES35R14/15 / REW35R15
AE005RP	39RP	ES39R16 / REW39R17

Esco Bush (Ripper)



Part No.	O E Ref	Fitting Tooth
AE002RB	25RB	ES25R112/ES25R114/ REW25R12/ REW512HD
AE004RB	35RB	ES35R14/15 / REW35R15
AE005RB	39RB	ES39R16 / REW39R17

Esco – Shank Protector



Part No.	O E Ref	Fitting Tooth	Bolt
REW39RP		REW39R17	BH1070

Fai / Komatsu



Part No.	Description	Bolt	Nut
KSA4052	Side Cutter	BP5830	NUT 5/8"
KSA4053	Side Cutter	BP5830	NUT 5/8"
KSA4054	Tooth	BP5830	NUT 5/8"

Galion Grader



<i>Part No.</i>	<i>Description</i>	
REW31280	Shank	
REW31281	Tip	

Hyundai



1



2



3

Part No.	Description	Type	Pin	Retainer
REW1613027H		1	RPJ350	AC6845
REW2623046H		2	RPJ450	AC6845
REW61E70101H		3	RPJ460	RRJ460

H & L Tips & Adaptors

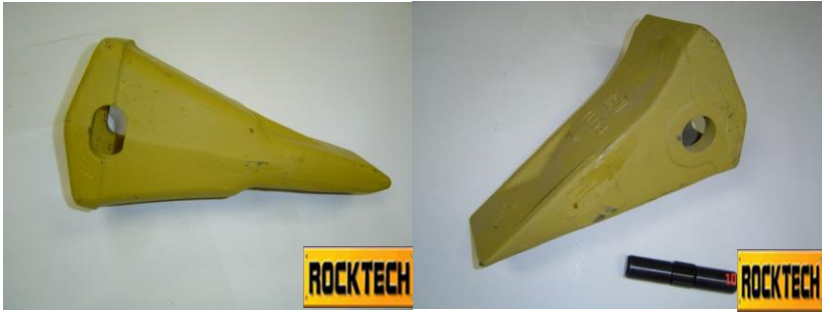


Part No.	O E Ref	Lock
REW23L	23H Tip STD	REW230PN
REW23ST	23H Tip Sharp	REW230PN
REW2740-AFW-23	23H Adaptor	REW230PN

J.C.B.

Part No.	O E Ref	Description	Bolt	Nut
REW3205	53103205	Tooth	BP3425	NUT $\frac{3}{4}$ "
REW3208	53103208	Side Cutter	BP3430	NUT $\frac{3}{4}$ "
REW3209	53103209	Side Cutter	BP3430	NUT $\frac{3}{4}$ "

Komatsu Ripper Tips



Part No.	O E Ref	Mach	Fastener
REW21331	195-78-21331	D355A-3	AC9600
REW11253	141-78-11253	D65	AC9600

Massey Fergusson



Part No.		Bolt	Nut
REW1462201		BP5830	NUT $\frac{3}{4}$ "

Volvo



<i>Part No.</i>	<i>Description</i>	<i>Fastener</i>
REW9937	Ripper Tip	REW250PN

Buckets

Attachments



Technological advances have produced extremely powerful high capacity machines which make tough demands on attachments. The materials we use have the necessary specification to meet those demands. The design of our range of attachments is aimed at providing the customer with durable, easy to use, practical equipment.

We also provide a full refurbishment, repair and crack detection facility.

Heel Shroud

2



1



Fits most loader and Excavator Buckets
Fits on the outside of Buckets giving Extra wear material in high wear areas

Part No.	Type	Lock	
REW4497 (6kg)	1		
REW6697 (14kg)	2		
REW6697-5HX (34kg)	2		

Cutting Edges

Purpose build Blades. V-Lips, spade nose lips, Bolt on blades etc. can be produced exactly to suite individual machines and applications. Send us a dimensioned sketch or drawing and we will send you a quotation. Our special blades and lips are produced from wear resistant plates and bars.

An extensive range of cutting edge sections are available for wear parts applications.

A range of high carbon and heat treatable boron steel specification is available.

The standard boron steel range provides high strength and toughness after heat treatment.

This makes them a popular choice for “bolt on” parts for bulldozer blades and bucket edges, which use single and double bevel flats.

The standard range of high carbon steels offer lower tensile strength and toughness compared with the boron steel range.

Hardox 400 and 450 “Abrasion resistant” steel is intended for applications where demands are imposed on abrasion resistance in combination with impact. Possesses very good weld ability.

Hardox 500 is an abrasion resistance plate with a hardness of 500HB, intended for applications where demands are imposed on abrasion resistance.

End Bit H. D. Cast



Thicker in wear area.

Part No.	O E Ref	Fitting Machine
REW11170/80	1407011170/80	Kom D65
REW1547021346/56	1547021346/56	Kom D85
REW17M7121930/40	17M7121930/40	KomD155/3 Kom D275
REW1875/76	9W1875/76	Cat D6H
REW1957161930/40	1957161930/40	Kom D375/3
REW4541/42	8E4541/42	D10 EWL 7 hole
REW4545/46	8E4545/46	D11 EWL 9 hole
REW8283/84	7T9089/90 3G8291/92	D8R/D9N
REW8843/44	4J8843/44	D7H/824C

Grader Blades



Manufactured from Heat treatable Boron steel producing high strength and toughness.

Part No.	O E Ref	Size
AG4858BS		4 FT X8"X5/8" thick 5/8" hole
AG5858BS	7D4509	5 FT X8"X5/8" thick 5/8" hole
AG6858BS	5D9562	6 FT X8"X5/8" thick 5/8" hole
AG7858BS	5D9561	7 FT X8"X5/8" thick 5/8" hole
AG7834BS	7D1158	7 FT X8"X5/8" thick 3/4" hole
AG8858BS	5D9731	8 FT X8"X5/8" thick 5/8" hole
AG8834BS	8J9821	8 FT X8"X5/8" thick 3/4" hole
AG6834HD	5D9558	6 FT X 8"X3/4"X5/8" hole
AG7834HD	5D9559	7 FT X 8"X3/4"X5/8" hole
AG8834HD2	7D1949	8 FT X 8"X3/4"X5/8" hole

Weld on Lugs



Grid Rollers

Part No.	O E Ref	
REW0100		

Half Arrow



- 1) Improve bucket penetration
- 2) Adds more wear material to base edge
- 3) Can be used as side cutters in Excavator buckets

Heat treated, quenched and tempered to $\pm 475\text{HB}$

Part No.	Width mm	Length mm	Thickness mm	
ROC22376854	254	3658	29	
ROC22376854HD	254	3658	40	
ROC22376859	203	3000	19	
REW25429	254	1200	29	Cast Section
REW25440	254	1200	40	Cast Section

L. H. D.



The system is principally designed for use with underground mining loaders of the L.H.D. type (load, haul, dump). It can also be used on conventional front end loaders in high abrasion applications. Suitable for machines with Lip thickness 30 – 40mm

Part No.	
REW40CEN	LHD Centre
REW40LH	LHD Corner L H
REW40RH	LHD Corner R H
REW25429	1,2m Half arrow section
REW25440	1,2m Half arrow section

Moils



All our demolition tools are manufactured overseas in an O.E.M. approved facility.

We can supply tools for all makes of hydraulic hammers i.e. Rammer, Montabert, Krupp, Teledyne.

Different working lengths and ends are available, including chisels, points and blunt.

The steel quality of our tools guarantees our tools to succeed in the harsh South African conditions, without damaging your hammer.

A wide range of tools are available ex-stock, and a delivery time of 6 – 8 weeks for non stock items.

Piling



Fish Tail – Jiffy's

<i>Part No.</i>	<i>Description</i>
REW100	Fish tail
REW14F	Jiffy Tip 1 ½
REW145	Jiffy Tip Single

Re-pointers



For welding onto worn teeth. Will greatly increase the life of loader teeth.

Part No.	L	W	H	
REW10060				
REW11052				
REW190150				

Side Cutters



Provides protection for bucket sides. Increases bucket width.

<i>Part No.</i>	<i>Type</i>	<i>Bolt and Nut</i>
REW124L	TLB	BPN2080
REW125R	TLB	BPN2080
REW8002L	ESCO	BH1030
REW8002R	ESCO	BH1030

Shrouds



Part No.	Original Ref	Description
REW1079C	ES1079C	Shroud Centre
REW1079LH	ES1079LH	Shroud LH
REW1079RH	ES1079RH	Shroud RH

SHROUDS



Part No.	Protection for the Leading Edge on buckets
ZX 200	Leading Edge - 25mm
ZX 350	Leading Edge - 25mm
ZX 500	Leading Edge - 40mm
ZX 650	Leading Edge - 50mm
ZX 850	Leading Edge - 50mm
EX 1200	Leading Edge - 50mm

All manufactured names, numbers, symbols and descriptions are used for reference purposes and it is not implied that any part listed is the product of those manufacturers.

T E Plows



Part No.		Bolt	Nut
AXTE001	R.H. Mouldboard	BP5830	NUT 5/8"
AXTE002	L.H. Mouldboard	BP5830	NUT 5/8"
AXTE0041	Shank Curved		
AXTE0047	L.H. Plow	BP5822	NUT 5/8"
AXTE0048	R.H. Plow	BP5822	NUT 5/8"

Wacker



Part No.		Fastener
WP10001	Dynapac wacker plate	
WP10002	Webber wacker plate	
WP56030	BS60 wacker plate med.	
WP56033	BS52 small wacker plate	
WP56035	BS62 wacker plate	
WP56500	BS500 wacker plate	
WP56600	BS600 wacker plate	

Wear Buttons



- Ideal for smaller areas requiring wear resistant material
- White iron with a hardness of 700 Brinell.
- Combination of high Chromium white iron metallurgically bonded to a mild steel backing plate for easy welding.

<i>Part No</i>		<i>Diameter</i>	
WB75		75 mm	
WB90		90mm	



28 Bosch Street, Rustenburg North

014 596 6463

Whatsapp line: 0824695176

sales@hfhydraulics.co.za

PARTS SUPPLIED:

The following is a brief summary of parts available :

- Donaldson Filtration
- All parts on LHD's and rigs
- Alternative Deutz parts
- All pumps, valves and cylinders
- H-frames and buckets
- Consumables products –Daily used constraints in kit forms for Artisans: Fitters and Electricians Bolts and Nuts .
- Earthmoving Wear parts .

